

Gas Countertop **COOKING**



Powerful, Efficient, **COMPACT**

There is more than one way to cook just about anything! With Globe's wide selection of countertop charbroilers and griddles it won't take a bigger budget or a bigger kitchen to manage it.

Compact griddles and high-polished cooking surfaces designed for even heat distribution... high-efficiency gas charbroilers, hot plates and fryers, gas floor fryers and the Gas Stock Pot Range, all backed by a 2-year parts and labor warranty!

Globe® Gas Charbroilers

- Stainless steel front, available in 15", 24", 36", and 48" widths
- Stainless steel, insulated double wall construction with extended cool-to-touch front edge
- High performance 40,000 BTUs per burner
- Stainless steel U-style burners provide heat control every 12" and flame every 6"
- Choose from stainless steel, cast iron radiants or char rock
- Heavy-duty, reversible cast iron grates with drip flavor edge
- Field convertible to radiant, char rock, or combination
- Unit ships Natural Gas with LP conversion kit included

Not available in Canada



△ GCB36G

Gas Charbroiler Accessories:

- Charrack Kit includes 30 count box of char rocks & two 6" char racks
- Stainless steel tent radiant
- Cast iron tent radiant
- Char Rock (30 count)
- Metal Char Rack
- 6" Char Grate
- 3" Char Grate

Advantages of Radiant Heat

Heats evenly | Easy to clean | Fewer flare-ups

▽ Cast Iron Radiants



CHARRACK KIT▷
Two 6" racks and 30 rocks



Globe® Gas Griddles

- 1" highly polished griddle plate fully welded to stainless steel frame for added heating efficiency
- Stainless steel front, manual or thermostatic controls in 24", 36", 48" (manual 15" also available) and 60" thermostatic
- High performance 30,000 BTUs per burner
- Stainless steel U-style burner provides heat control every 12" and flame every 6"
- Stainless steel, insulated double wall front and side construction with extended cool-to-touch front edge
- Spatula wide 4" trough
- Unit ships Natural Gas with LP conversion kit included

Advantages of Char Rock

Increased flame and smoke for added flavor.

1" thick griddle plate
for added heating efficiency



GG36G △

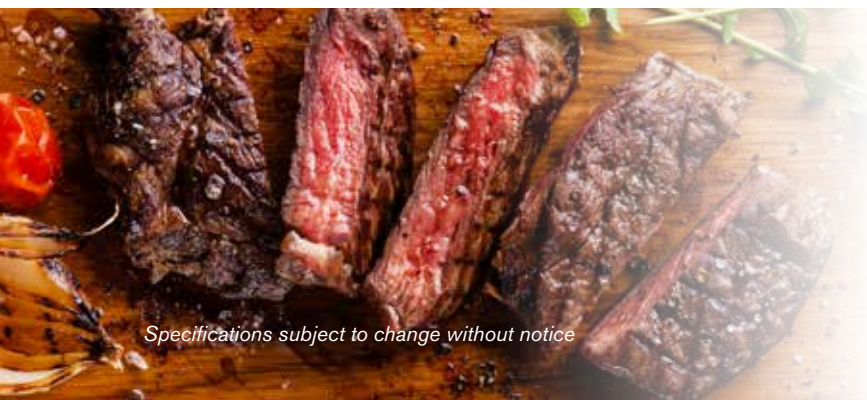


It's what's INSIDE that counts!
Globe gas griddles have insulated double wall construction.



Not available in Canada

COOKING



Specifications subject to change without notice

Economy **GAS COUNTERTOP COOKING**

Chefmate® by Globe Radiant Gas Charbroilers Models: **C24CB-SR & C36CB-SR**

Durable and powerful radiant heat. **Chefmate® by Globe** Charbroilers deliver 35,000 BTUs per burner and are available in 24" and 36" countertop widths.

- Maximum heat distribution with heavy-duty 10-gauge stainless steel radiants & durable steel U-style burners, providing heat control every 12" and flame every 6"
- Stainless steel construction and extended cool-to-touch front edge offers safety for the operator
- Versatile heavy-duty cast iron grates — reversible with 3 adjustable grilling positions
- Easy access — adjustable pilots accessible from the front
- Easy cleaning — 4" back and side splashes, and grate that lifts off completely for easy cleaning and servicing
- Stainless steel legs with adjustable non-skid feet



C24CB-SR >



Chefmate® by Globe Gas Griddles Models: **C24GG & C36GG**

Chefmate® by Globe Gas Griddles deliver the quality and value you expect from Globe, available in 24" and 36" widths to fit your footprint.

- High performance — 30,000 BTUs per burner
- Control at your fingertips — manually controlled steel U-style burners provide heat control every 12" and flame every 6"
- Stainless steel construction and extended cool-to-touch front edge
- Uniform heat distribution with 3/4" polished griddle plate
- Easy cleaning — 3.25" back and side splash, 3.25" spatula-wide trough. Cooktop lifts completely off for servicing
- Stainless steel legs with adjustable non-skid feet

< C24GG



< C24HT



Chefmate® by Globe Gas Hot Plates Models: **C12HT & C24HT**

Chefmate® by Globe Hot Plates give back valuable kitchen space. Save your footprint with Globe's 12" (2-burner) and 24" (4-burner) countertop hot plates.

- Individual flame controls and 25,000 BTUs of power per burner
- Stainless steel construction and extended cool-to-touch front edge
- Heavy-duty cast iron grates for maximum heat distribution
- Stainless steel legs with adjustable non-skid feet

All **CHEFMATE™ BY GLOBE** gas countertop cooking equipment has a one-year parts and labor warranty.



Electric SANDWICH GRILLS

Powerful, Efficient, **COMPACT**

Big or small, single or double, smooth or grooved: however you need it, Globe has it. Constructed of durable stainless steel with seasoned cast iron plates, Globe sandwich grills are heavy-duty and portable, perfect for front or back-of-house use.

Globe® Bistro Series 10" Single & Double Sandwich Grills

- Single grill cooking surface is 10" wide
- Double grill surface size: continuous 18"W bottom plate and two 8.375"W top plates make it easy to cook different products at the same time
- Heavy-duty, seasoned cast iron grill plates (*smooth or grooved*)
- Heavy-duty hinge with adjustable tension spring
- Temperature thermostatically controlled up to 570°F
- Stainless steel scraper included with grooved units
- Optional panini brush available
- Stainless steel construction
- Large capacity, easy-to-clean, stainless steel catch drawer
- Single grills 120V, 1800W, Double grills 240V, 3200W



GSGDUE10 ▷



**SMOOTH
OR
GROOVED
GRILL
PLATES!**



△ GPG10

"I've been using Globe sandwich grills for years; they're great, well constructed products."

***— Helmut F.J. Holzer, CMC-GMC
VP Corporate Executive Chef R&D
Gourmet Foods International***

Electric SANDWICH GRILLS



△ GSG1410



Globe® Mid-Size Sandwich Grills

- Single cooking surface: 14" x 10"
- Double cooking surface: two 14" x 10" plates make it easy to cook different products at the same time.
- Heavy-duty, seasoned, cast iron grill plates available in smooth or grooved, or **combo smooth/grooved**
- Heavy-duty hinge with adjustable tension
- Temperature thermostatically controlled up to 570°F
- Stainless steel scraper included with grooved units
- Optional panini brush available
- Stainless steel construction
- Large capacity, easy-to-clean, stainless steel catch drawer
- 120V, 1800W

All **ELECTRIC** countertop products have a one-year parts and labor warranty. Optional Accessories are available for several items featured in this brochure.

Globe® Deluxe 14" Single & Double Sandwich Grills

- Single grill cooking surface: 14" x 14"
- Double grill cooking surface: two 14"x14" plates make it easy to cook different products at the same time
- Heavy-duty, seasoned, cast iron grill plates available in smooth or grooved, or combo smooth/grooved
- Heavy-duty hinge with adjustable tension
- Built in electronic timer
- Four programmable presets
- Temperature thermostatically controlled up to 570°F
- Stainless steel scraper included with grooved units
- Optional panini brush available
- Stainless steel construction
- Large capacity, easy-to-clean, stainless steel catch drawer
- Side handles for portability
- Single grills: 120V, 1800W
Double grills: 208-240V, 5400/7200W

GPG14D ▷



GPGDUE14D ▷



Electric COUNTERTOP COOKING



△ GEG24

**Use in front of house,
back of house, or both.**



FOR INDOOR USE ONLY



△ PG36E

Globe® Electric Griddles - Key Features

- Highly-polished griddle plate fully welded to stainless steel frame
- Stainless steel construction and extended cool-to-touch front edge
- Heat and thermostatic control every 12"
- Removable, large capacity easy-to-clean, stainless steel catch tray
- Seamlessly welded splash guard
- Easy On/Off switch for each element

Globe® Medium Duty Electric Griddles

- Available in 24" and 36" widths x 16.5" deep
- Highly polished, 1/2" thick griddle plate for consistent cooking and easy clean-up
- 4" Spatula wide trough
- 24" Model 208-240V, 4200W/5600W
36" Model 208-240V, 6300W/8400W

Globe® Economy Electric Griddles

- Available in 24" and 36" widths x 13" deep
- Highly polished, 3/8" thick griddle plate
- 24" Model 208-240V, 2700W/3600W
36" Model 208-240V, 4000W/5400W

All **ELECTRIC** countertop products have a one-year parts and labor warranty.

Electric COUNTERTOP FRYERS

Globe® Electric Countertop Fryers

- Available in 10, 16, and 32 lb. oil capacities
- All stainless steel construction
- Swing-up element and easy-to-lift out, stainless steel fry pot with handles
- 70°F–375°F thermostat
- High limit thermal control with manual reset
- Removable, easy-to-clean control box and element
- Twin nickel-plated fry baskets with cool-to-touch insulated handles, available in small and large sizes
- PF10E, 120V
PF16E & PF32E, 208-240V



△ PF10E

△ PF32E